

A powerful say for parents, carers  
and their children with special  
educational needs and disabilities

hackney  
parent  
partnership  
service

# your child's proposed statement

How to read your child's  
statement and what to  
do next



[www.learningtrust.co.uk](http://www.learningtrust.co.uk)

This leaflet provides some advice about how to read your child's proposed statement. You need to read the letter that came with the proposed statement too.

## We are here for you

Also you may find it useful to talk to someone from Hackney Parent Partnership Service.

**Hackney Parent Partnership Service**  
**Hackney Ark, Downs Park Road**  
**London E8 2HY**  
**T. 020 7014 7123**  
**E. [parentpartnership@hackneyark.chpct.nhs.uk](mailto:parentpartnership@hackneyark.chpct.nhs.uk)**

**hackney  
parent  
partnership  
service**

A powerful say for parents, carers  
and their children with special  
educational needs and disabilities.



# At last it's come

The letter you've been waiting for! After all the form-filling, the assessments and the waiting, you finally hold in your hand the document that sets out your child's educational needs in detail and how they should be met.

- Take a pencil and start by reading the document carefully.
- Look out for misspellings and incorrect dates etc.
- Don't panic! These can easily be corrected.
- Mark text which needs changes.

## Get a general idea of:

- How your child is described in **part 2**.
- Do you recognise him/her?
- How your child's needs have been set out as Learning Objectives in **part 3**.
- How the provision to meet these needs has been written (Resources and Teaching Approaches).

The statement is based on all the reports written about your child during the assessment by you and the people working with your child.

**Check through the reports to make sure that nothing important has been left out.**

Parents are not always completely happy with what is written first time, but small problems can usually be resolved by talking to your child's case manager at The Learning Trust.

# Is it a High Incidence or Low Incidence Statement?

Check **part 3** of the statement: **Special Educational Provision**.

High Incidence statements are funded through the school's budget for special educational needs, without any extra resources given to the school to meet your child's needs.

Low Incidence Statements have different resource levels.

The Code of Practice for Special Educational Needs 2001 states that **"A statement should specify clearly the provision necessary to meet the needs of the child."** (8:36)

**"Provision should normally be quantified (eg in terms of hours of provision, staffing arrangements) although there will be cases where some flexibility should be retained in order to meet the changing special educational needs of the child concerned."** (8:37)

Ask your child's Case Manager to explain how much support this means for your child.

## **If the proposed statement does not meet with your expectations:**

- Tell your child's case manager.
- Talk it over with your child's school SENCO and/or Hackney Parent Partnership Service.
- Do you have different expectations of the amount and type of provision that would be 'adequate' to meet your child's needs?
- Were your expectations right or realistic?
- Has something been left out?

See the letter that came with the statement for details about meeting with your Case Manager.

If you need more help with understanding what is written, or advice about what to do next, please contact your child's case manager.

You can also get confidential advice and support from Hackney Parent Partnership Service.

## Before contacting The Learning Trust

You might find it useful to write down the different points you would like to make. Use a pencil to mark things you are unclear about before telephoning or meeting with your case manager.

- The Learning Trust has a duty to meet your child's needs and to make efficient use of the resources it has for all Hackney children.
- A statement is not a perfect 'prescription' for any child, but it does provide useful information to help build a successful education.
- A well written statement will provide the receiving school with the best possible information to set up an individual education plan for your child, and your child's progress can be checked at Annual Review against the targets set out in the statement.

If The Learning Trust does not agree to make any changes to the statement that you have requested and finalises the statement, you do have a right of appeal against what is in the statement.

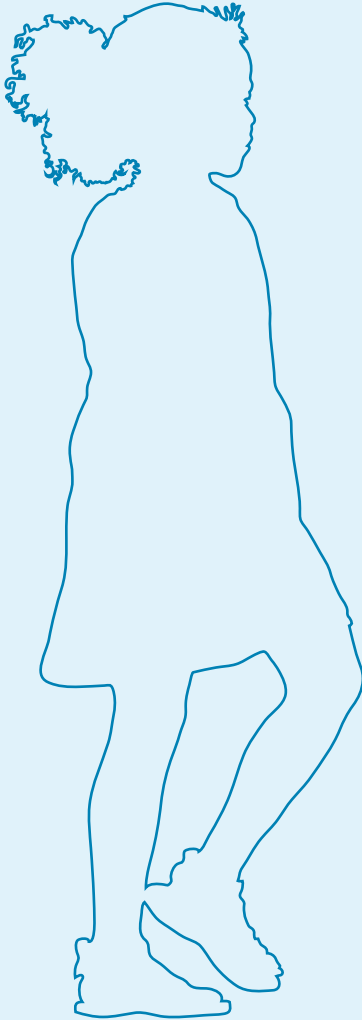
The Learning Trust will tell you about arrangements for resolving disagreements and your right of appeal to the Special Educational Needs and Disability tribunal, and where you can get help with this.



**80% recycled**  
Printed on  
80% recycled paper

# hackney parent partnership service

Hackney Ark  
Downs Park Road  
(Corner of Cecilia Road)  
London E8 2HY  
T. 020 7014 7123  
E. [parentpartnership@hackneyark.chpct.nhs.uk](mailto:parentpartnership@hackneyark.chpct.nhs.uk)



**the learning trust**  
the future for education in Hackney